



TECHNICAL DATA SHEET

TUBULAR RAIL BRACKET p/n MHK-RT-A(G or S)

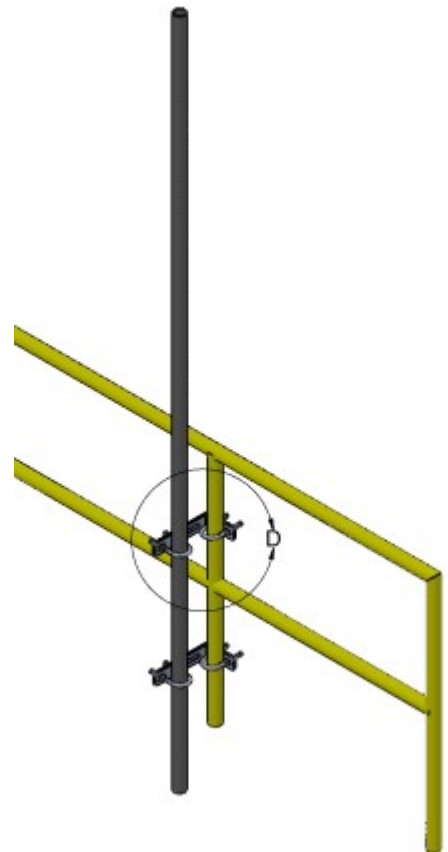
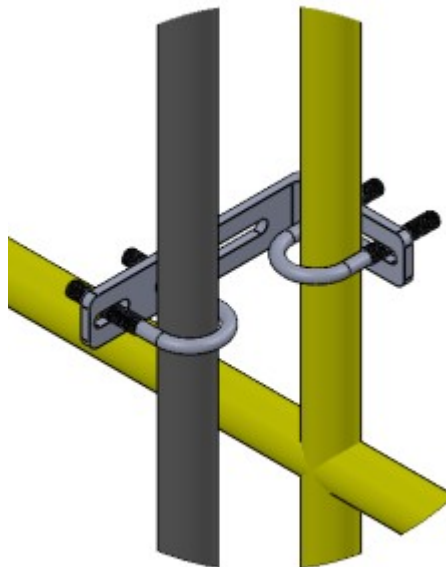
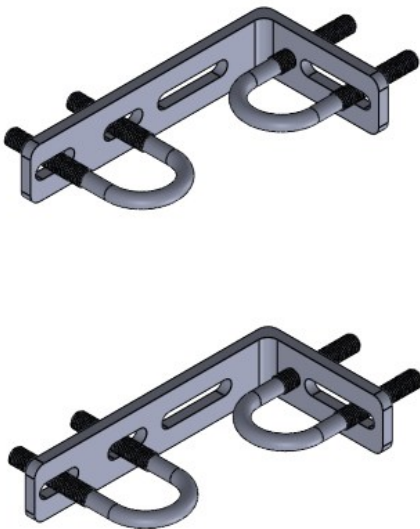
DESCRIPTION

**3/8" 304 OR 316 STAINLESS STEEL, HDG
CARBON STEEL, ALUMINIUM**

Bolt on "L" brackets, for mounting stanchion poles and apparatus to tubular handrails or walkways.

Fits up to 2" nominal pipe and tube.

The system components and installation hardware are kitted and shipped together as a complete system for ease of assembly and installation on site.



SF INDUSTRIES

1 979 421 9024

sales@sfindustriesusa.com

www.sfindustriesusa.com

1910 EAST TOM GREEN ST
STE 1A

BRENNHAM, TEXAS 77833